

Cornell Cooperative Extension Delaware County



2024 Annual Report

*Growing Healthy Families, Confident
Youth, Successful Farms, and Stronger
Communities*

2024 STAFF

Interim Executive Director: (4/24-Present)

Nancy E. Grotevant

Executive Director: (1/24-2/24) Mandeep Virk-Baker

Finance Manager: Charles Engle

Finance Assistant: Zoe Harris-Ray

Office Coordinator: (1/24-6/24) Stacey Young

4-H

Interim 4-H Team Leader: (3/24-Present)

Ashley Silano-Moore

4-H Team Leader: (1/24-2/24) Emily Roach

4-H Resource Ed/4-H Camp Shankitunk Admin: (1/24-2/24)

Corrine Tompkins

4-H Subject Educator:

Kaitlyn Conklin

4-H Camp Shankitunk Director:

Jon Conklin

AGRICULTURE

Horticulture/Natural Resource Educator:

Carla Crim

WAP Sr Team Leader/Nutrient Management:

Dale Dewing

Nutrient Management Community Educator: (1/24-8/24)

Benjamin Helper

AG Program Team Leader/CIG Enhanced Manure Management Project Coordinator:

Paul Cerosaletti

WAP/Precision Feed Management Community Educators:

April Wright-Lucas, James Romack

Dairy/Livestock Sr Resource Educator:

Richard Toebe

Farm Business Management & AG Development Educator:

Desiree Keever

WAP Sr Administrative Assistant:

Kim Holden

HUMAN ECOLOGY

Human Ecology Team Leader:

Ashley Silano-Moore

EFNEP Nutrition Educator:

Amy VanAlstyne

SNAP Nutrition Educator:

Maegan Freeman

Community Energy Advisor:

Sam Edel

BOARD OF DIRECTORS

President: Betty Scott, Masonville

Vice President: Carol Michalski, Walton

Treasurer: Brad Taggart, Sidney Center

Secretary: Timothy Gutliph, Walton

Supervisor Representative: Wayland (Bud) Gladstone, Andes

Members: Carolyn Scobie, DeLancey; Andrea Balcom, Andes; Libby LePinnet Kelly, Delhi; Erin Johnson, Unadilla; Jason Mondore, Andes; Timothy Gutliph, Walton; Christina Losie, Davenport; Stacy Palmatier, Hobart

Cornell Representative: Danielle Hautaniemi

PROGRAM COMMITTEES

Agriculture Issue Committee:

Vice Chairperson: Kirk Fletcher, Walton; Secretary: Carolyn Scobie, DeLancey; Brad Taggart, Sidney Center; Vanessa Merrill-Wickham, Walton; Joyce Gray, New Kingston; Andrew Hinkley, Sidney; Dennis Deysenroth, Hobart; Advisors: Janet Beken Smith, Bloomville, Jackie Oliver, Delhi

Human Ecology Program Committee:

Chairperson: Carol Ann Michalski, Walton; Vice Chairperson: Paul DeAndrea, Franklin; Secretary: Joan Hale, Sidney; Eileen Kline, Delhi; Marabel Mueller, Sidney; Christina Losie, Davenport; Simon Purdy, Delhi

4-H Youth Development Committee:

Chairperson: Lonny Schaefer, Deposit; Vice Chairperson: Lisa Nichols, Walton; Secretary: Rachel Collins, Delhi; Jill Coleman, Delhi; Justin Ruff, Unadilla; Advisors: Polly Dellacrosse, Delhi; Delena Wood (Teen Advisor)

4-H Camp Committee:

Carol LaTourette, Sidney Center; Doug Whittaker, East Meredith; Lindy Taggart, Walton; Cathy Scofield, Walton; Polly Dellacrosse, Delhi

A Message From Our Board President

Dear Extension Members,

2024 has been a year of changes. Change is hard, the departure over the past two years of long time valued staff members who had a positive impact on the organization and the community they served can be scary and disconcerting but, with change also comes the opportunity for growth, re-commitment and development of new and exciting opportunities. We have welcomed Nancy Grotevant as our Interim CCE Executive Director. Nancy who was a Delaware County 4-H youth has returned to her roots and brings years of experience in the Pennsylvania Extension system home to us in Delaware County where she is committed to the vision and mission of our extension.

There is much to be excited about as we end 2024 and look to 2025. The addition of Desiree Keever to our agriculture program will provide support to our farming community. Paul Cerosaletti has returned to the CCE Hamden office and will serve as team lead over the agriculture program. We welcomed Samantha Edel as our community energy advisor and added Charles Engle as our finance manager to provide financial oversight and support.

The 4-H program/ which is near and dear to my heart, is going through a period of transition. The 4-H volunteers which are the heart of our very successful 4-H program stepped up this summer to provide great experiences including a successful Delaware County Fair. Ashley Silano-Moore has served as interim team lead since March and together with Kaitlyn Conklin have worked hard to provide valuable 4-H experiences to our 4-H youth. Jon Conklin returned as camp director and along with his dedicated camp staff provided a great camp season. The search for the next 4-H team lead is underway.

Next year we have a lot of work to do. Nancy will assist us with a search for our next Executive Director. Our issues committees will continue to provide program input working with our staff to continue to develop innovative and relevant programs for our community. We will strengthen our existing relationships with the county, the Watershed Agricultural Council and other key stakeholders in our county.

I would like to thank everyone, staff, volunteers, the Delaware County Board of Supervisors and the community as a whole for their continued support of Delaware County CCE.

Sincerely,

Betty Scott

President, Board of Directors

MISSION OF CCE DELAWARE COUNTY

Cornell Cooperative Extension of Delaware County puts knowledge to work in pursuit of economic vitality, ecological sustainability and social well-being. We bring local experience and research based solutions together, helping New York State families and communities thrive in our rapidly changing world.

A Message From The Interim Executive Director

Extension has been a part of my life for as long as I can remember. From my mother hosting Home Bureau meetings in our living room, to being a life-long member of 4-H, then getting my degree in Family and Consumer Science with the hope of becoming a 4-H Agent. I reached this goal and retired after working for 36 years with Cornell Cooperative Extension and Penn State Extension.

Why am I telling you this? Because many people ask me “what made you accept the Interim Executive Director position with Cornell Cooperative Extension of Delaware County-You are retired”. My answer has always been “because I truly believe in all Cooperative Extension has to offer and if I can help, I need to try”.

I believe everyone will agree this has been a difficult year. A difficult year for the Board of Directors and Issues Committees, the volunteers, 4-H members, and most of all the staff. We are grateful for those that stepped up to support us, gave a kind word when needed, and gave their time freely. Programs as you knew them may have come in different forms, but many programs would not have taken place without your support.

In the seven months I have been the Interim Executive Director and as we move ahead, I am excited to have hired four new staff, with more to come, including a new Executive Director. Each addition brings varied strengths, creativity and enthusiasm and I am confident they will work together to reach our mission of putting knowledge to work.

As we look forward to 2025, we will seek to further enrich the relationships of community partners, collaborating to extend the reach and scope of our services.

A special thank you goes out to the Delaware County Supervisors. Their continued support for our Association not only helps us accomplish relevant and sustainable programs but continues to make Camp Shankitunk one of the premier summer camps.

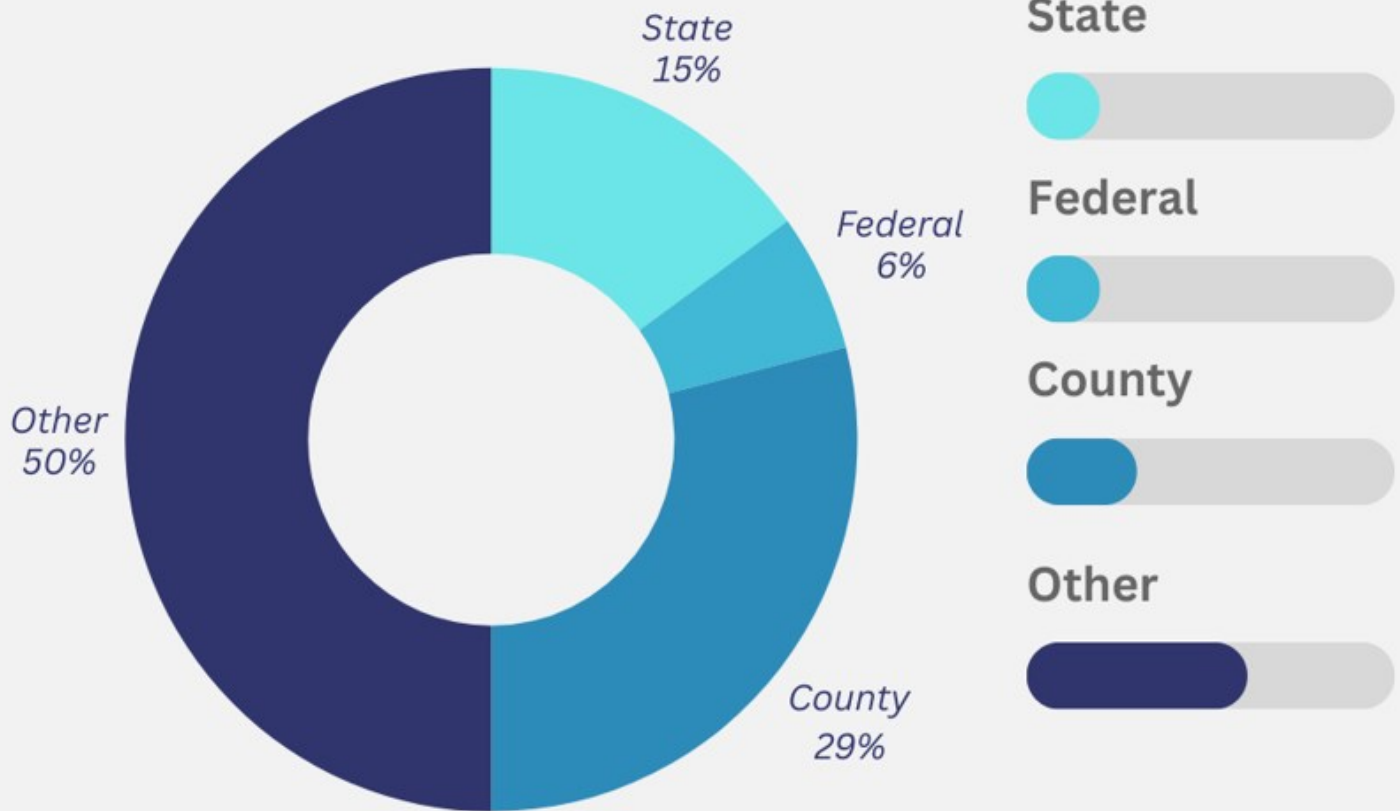
A very special thank you to our outgoing Board Members and Issue Committee Members: Andrea Balcom, Brad Taggart, Carol Michalski, Carolyn Scobie, Andrew Hinkley, Erin Johnson and Paul DeAndrea. Your stewardship, commitment and support to our Association will be missed.

Sincerely,

Nancy E. Grotevant

Interim Executive Director

ESTIMATE OF FINANCIAL SUPPORT RECEIVED



Human Ecology Programs

- Delaware Rural Healthcare Alliance
- Snap-Ed
- Expanded Food & Nutrition Education Program
- Environment and Energy

4-H Youth Development Programs

- 4-H Camp Shankitunk
- Activities
- Animals
- STEM & Life Skills

Agriculture Programs

- Crop and Animal Production
- Business Management and Profitability
- Horticulture and Natural Resources

BEGINNING SHEPHERDS GROUP HELPS THESE NEW FARMERS SUCCEED

Delaware County has seen a large number of farm startups in recent years. Starting a new farm business is fraught with unexpected challenges, steep learning curves, a sense of isolation, and difficulty in discerning what “information” out there is correct and relevant. These beginning and new to the area farmers often reach out to CCE Delaware looking for information and support.

Rich Toebe, Livestock Educator, often responds to these inquiries. Rich realized that he was independently working with six new shepherds, all with less than two years of experience. Thus, the Beginning Shepherds Discussion Group was born. Starting in October of 2023, these six shepherds have been meeting monthly—often at each other’s farms. Each month has a focus area, such as breed selection, winter housing, pasture management, or lambing skills.

Starting in June of this year, a pasture and sheep health study was started with monthly data collection on each participant’s farm. The information collected really help inform the members of the impact their day-to-day decisions have on pasture and animal performance. In fact, the results of the study were presented by some of the members at the Cornell Sheep & Goat Symposium in Ithaca in early November.

The most significant result has been that a group of Beginning Shepherds created a peer group that supports everyone. Experiences are freely shared with each other, a sense of “being in it together” has been created,



Members of the Beginning Shepherds Group work together to weigh sheep out on pasture.

20th Annual 4-H Duck Race



This year Delaware County 4-H hosted the 20th Annual 4-H Duck Race Fundraiser. Thanks to the hard work and effort of Delaware County 4-H Members as well as the generosity of the community, this year's Duck Race was a great success! On July 20th at noon, spectators and 4-H Members watched as over 700 ducks floated down the river with the exciting results as follows:

1st Place: Cierra Strub, 4-H Salesperson: Audrianne Zeccardi, Salesperson's Club: Futures Finest

2nd Place: Marc Evans, 4-H Salesperson: Mayla Evans, Salesperson's Club: Super Clovers

3rd Place: PJ Hammer, 4-H Salesperson: Austin Clark, Salesperson's Club: Super Clovers

4th Place: Danielle Morrell, 4-H Salesperson: Delana Wood, Salesperson's Club: Kountry Kids and Kritters

5th Place: Melinda Butts, 4-H Salesperson: Hudson M., Salesperson's Club: Futures Finest

Random Drawing Winner: Andi Barcomb

1st Place 4-H Salesperson: Addie Rappold of the Kountry Kids and Kritters Club; 100 Tickets Sold

2nd Place 4-H Salesperson: Isaac Storrs of the Adventure Clover Club; 65 Tickets Sold

3rd Place 4-H Salesperson: Tanner Neale of the Adventure Clover Club; 55 Tickets Sold

4th Place 4-H Salesperson: Lucas and Gabe Neumann of the Adventures Clover Club; 49 Tickets Sold each

1st Place Sales by Club: Adventure Clover with 301 Tickets sold in total by the club members

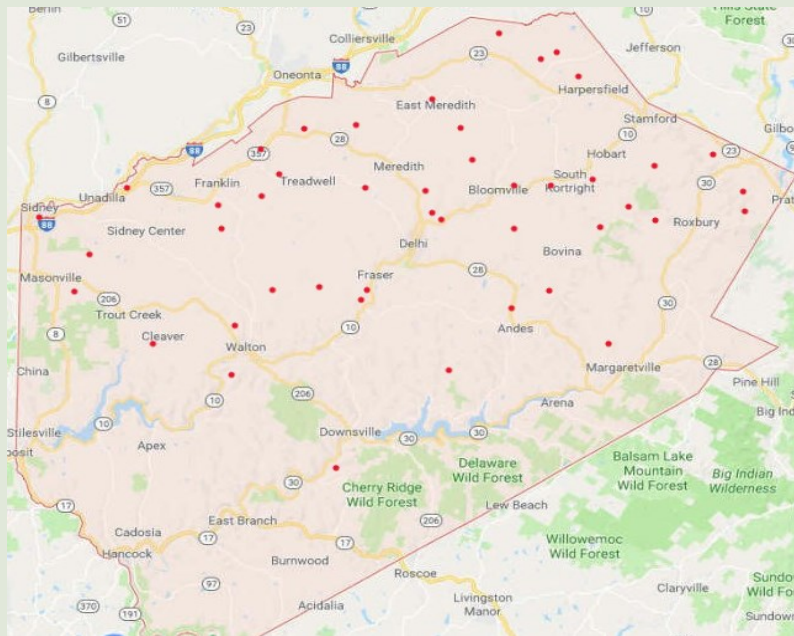
2nd Place Sales by Club: Kountry Kids and Kritters with 192 Tickets sold in total by the club members

Thank you for all 4-H Members who helped sell tickets for this year's Duck Race as well as everyone who purchased Ducks this year, you are truly appreciated!

DELAWARE COUNTY FARM ENHANCEMENT GRANT PROGRAM

The culmination of work on the Delaware County Farm Enhancement grant program was reached this year on most of the recipient farms. In 2022 CCE Delaware County was awarded funding by Delaware County Board of Supervisors from the American Rescue Plan to implement the Delaware County Farm Enhancement Grant Program. The program design was to be a direct funding program of awards from \$5,000 to \$25,000. Awards in the program were either for strategic investment in farm infrastructure that may not have been possible because of the challenging economic conditions resulting from the COVID-19 pandemic or reimbursement awards to mitigate the input cost escalations farms faced due to supply chain disruptions.

Funding was awarded to 49 farms through two competitive rounds of application. The initial funding allocation was \$480,020 to support 26 projects from the pool of 86 applicants. The high demand in the program secured a second round of \$500,000 in funding; enabling the selection committee to evaluate 69 project applications and support 23 additional farm infrastructure projects.



Funds distribution across the county

Many of the projects have now been completed and farm visits to close out the project grant process have been underway since July. The impacts of this grant have been deep and significant, ranging from restoring hope for a farm family to mitigating environmental impacts in maple operations. Projects were distributed across many sectors of Delaware County agriculture, investing in dairy, produce, beef, livestock, maple, aquaculture, hay and equine operations. Consistently across every farm, the message has been echoed that this grant enabled the farm to persevere and improve their operations.



“This grant gave us hope at a time when we didn’t know if the farm could go on” -Dickie Perry

This use of ARP funds served to stimulate the local economy with many of the farm projects spending substantial portions of their awards, and their own farm funds with local suppliers, contractors and installers to complete project initiatives. Inputs grants generated \$1.11 of in-county spending for every \$1 of grant money, and \$1.81 of NYS spending for every dollar of grant funds allocated. Infrastructure grants supported 22-99% of total projects costs across the 42 farms who received infrastructure project awards, and many of those projects were completed solely utilizing Delaware county suppliers and contractors.

This unique project has garnered attention across the country for its investment of America Rescue Plan funds in agriculture. Locally, the grant has been deeply appreciated by the 49 farm beneficiaries and who were kept vibrant through a very difficult economic time.





SNAP-ED SUCCESS

During this past year, SNAP educator, Maegan, had the opportunity to collaborate with the William B. Ogden Library to offer an international cooking series to teens within the community. The curriculum used for this program was Healthy for Life - the lessons within that curriculum were flexible enough to tie in with the additional cultural information that was being provided by Martha (William B Ogden employee) and allowed the teens to learn about cooking techniques and how to take their health into their own hands. During the six sessions, the teens made a variety of international foods, including chachouka with pita, causa peruana, and curry. The class broadened our knowledge of different cultures as well as different recipes. Martha talked about different spices that were used in each culture and we were able to experiment with them each week. We were all able to learn from each other and try things we may not have tried otherwise.



CCE NUTRITION EDUCATION IN DELAWARE COUNTY SCHOOL CROP PROGRAMS

Sometimes getting the word out about programming in our vast rural county can be challenging. Delaware County EFNEP has found an excellent partner in many school districts in the county which has helped us connect with families. This partnership is made possible through the *Creating Rural Opportunities Partnership* (CROP) grant which provides after-school programming for youth in many Delaware County Schools.



We provide nutrition programming for students in 3-8th grades in schools during their summer session. We follow up by attending open houses where we promote, and families can register for family-based cooking/nutrition programs that take place at their local school during the school year. This enables us to not only reach the student but the entire family, which has a greater impact.

10 Families at Charlotte Valley School participated in a 7 session series (March-April 2024) designed around nutrition education and food prep skills using whole foods. The families learned food safety, knife skills and increased their food prep confidence while making egg wraps, soup, veggie alfredo, stir fry, salad and homemade pizza. The sessions emphasize greater knowledge and consumption of fruit and veggies, whole grains, dairy while minimizing ultra processed foods. Label reading skills are practiced and food budget stretching ideas are shared. The hands-on application and use of nutrition activities and props makes the class more engaging for families. The families receive a cookbook and cooking utensils when they complete the class.

A comment we often hear from parents after completing series education is their children are trying and liking new veggies not previously eaten and are more interested in assisting with food preparation at home. Some comments received that reflect this “We have found that we like beans in this class and are consuming them more often” “Our family loves this class and the recipes. It has helped me as well as the kids because not I am thinking about making the healthier choices, I am reading labels more often and eating less junk”.

We will continue this format with schools because it works for families and the schools we partner with. Families are learning together and making lasting lifestyle changes that will have an impact for many years.

DCSWCD AND CCEDC PARTNER TO IMPLEMENT INNOVATIVE MANURE MANAGEMENT PROJECT

A leadership partnership of the Delaware County Soil and Water Conservation (DCSWCD) and CCEDC are implementing a multi-year project to help farms in Delaware County and the West of Hudson NYC Watershed improve farm productivity and improve water quality protection through enhanced manure nutrient management. The project is made possible by a \$2.95 million federal United States Dept. of Agriculture (USDA) Conservation Innovation Grant (CIG) awarded to the DCSWCD. Through a shared services agreement between the DCSWCD and CCEDC, Paul Cerosaletti is serving as Project Coordinator.

The project is a collaboration of local conservation partner agencies with a long history of working together; the DCSWCD, CCEDC, and Watershed Agricultural Council (WAC), who worked over several years to develop the proposed project and collaborated with our federal funding partner, the USDA Natural Resources Conservation Service. The local project team is also collaborating with Cornell University and Virginia Tech University to evaluate the project impacts.



The project will help farms with manure storage structures in Delaware County and the West of Hudson New York City Watershed reach the next level of nutrient conservation and water quality protection while also enhancing the efficiency and productivity of their farms. Its aim is the development of a local custom manure application service and incentivizing the adoption of enhanced nutrient management strategies offered *through* this service including; shallow disk manure injection, improved manure nutrient distribution, GPS-based variable rate control and geospatial record keeping. These services and technologies do not exist yet in the project area due to limitations of the size of our farms and their ability to invest in this technology and manure infrastructure, the geography of our region (small fields, hilly terrain), and lack of full-service custom manure services in the area. Additionally, the project seeks to prove the effectiveness of these enhanced manure management strategies and the custom services model of deployment to facilitate continued support and adoption beyond the life of the grant. To support this goal, the project will quantify social-economic impacts the custom services on participating farms, as well as model impacts on water quality through research partnerships with Virginia Tech and Cornell University.

MANURE CAN OFFSET NITROGEN FERTILIZER NEEDS AND INCREASE CORN SILAGE YIELD

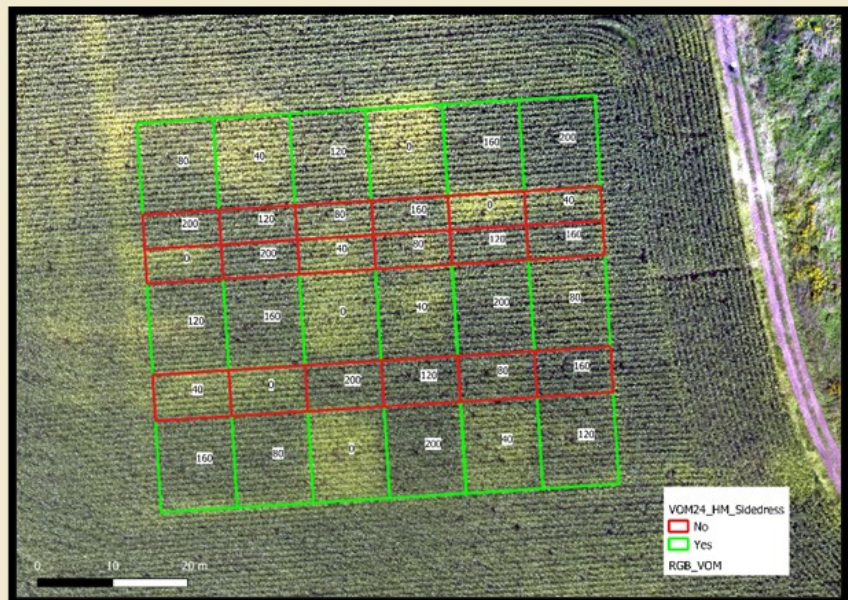
The CCEDC Ag Team collaborated with the Cornell Nutrient Management Spear program on an on-farm research project in 2023 and 2024 at the Hanselman farm in Bloomville to better understand the value of manure for corn production. Cooperating in this trial assures that local data contributes to statewide fertility recommendations that our local Nutrient Management Plans are based on, and that we can provide sound fertility advice that will optimize the costs, maximize yields and manage the environmental impact of growing corn for Delaware County farmers. Our collaboration in a local site also helps our farmers ‘buy-in’ to University research, as it has local data and therefore is perceived as relevant to agriculture in our region.

Manure contains all seventeen nutrients a plant needs, making it a tremendously valuable nutrient source for crop production. Applying manure to fields can also build soil organic matter, enhance nutrient cycling, reduce reliance on commercial fertilizer, and improve overall soil health and climate resilience. Additionally, previous research has identified a ‘yield bump’, a yield increase indicates that manure is not just supplying macro and micronutrients, but also benefits yield beyond nutrient contributions. This statewide project evaluates the nitrogen (N) and yield benefits of manure sources and manure application methods to corn silage and corn grain crops, and seeks to quantify these yield bumps and identify the cause of them.



The Delaware County site had six strips, three that received manure and three that did not, and each strip was divided into six sub-strips and sidedressed at a rate ranging from 0 to up to 200 pounds N/acre. The Cornell crew measured manure nutrient composition, soil fertility, yield and forage quality.

The results documented a “yield bumps” resulting from manure application, beyond the value of the nitrogen it supplies.





Delaware County Rural Healthcare Alliance



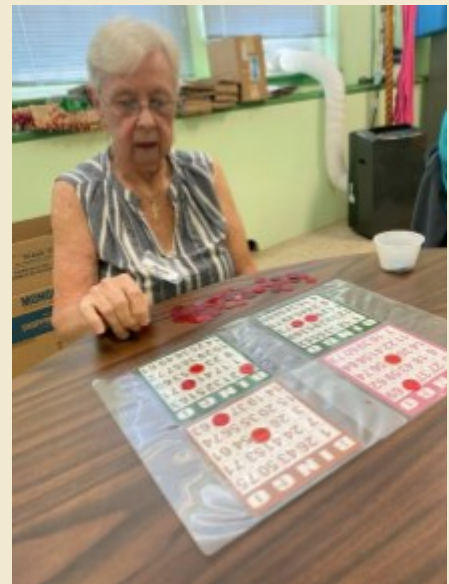
Delaware County Office for the Aging (OFA) continues their Tia Chi for Arthritis program with the support of the DCRHA. It is a one hour, twice a week program which runs for ten weeks. Participants learn steps 1-12 of Sun Style Tai Chi by Dr. Paul Lam. There are 4 certified instructors, 2 of them deliver classes as a team. Since January of this year classes have been held in Walton, Franklin, Arkville, Harpersfield, Downsville, Sidney and Delhi. There were over 150 participants.

A new program that OFA started this year with support from the DCRHA is Bingocize. Bingocize strategically combines the game of bingo, health education, and exercise. There are 4 certified instructors to deliver this program. Since January of this year classes have been held in Grand Gorge, Sidney & Delhi. There have been over 40 participants.

Bingocize, as stated by Lillian Browne from The Reporter, is a program that fuses physical exercise, mental stimulation, and the fun of Bingo into one hour of non-stop activity. This is a 10-week program that meets 2 times per week.

The Delaware County Public Health Department requested funds to purchase tick kits through the DCRHA this year. The goal of tick kit distribution is to promote awareness about tick safety and tickborne illness with a long-term goal of reducing tick related illness in Delaware County. Approximately 300 tick removal kits were distributed to village, town and county highway departments for full time and seasonal workers. Over 600 kits were distributed at the Delaware County Fair.

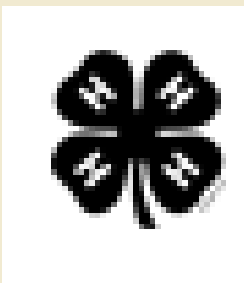
These kits were distributed in the CCE Human Ecology building to go with a tick exhibit highlighting tickborne illnesses, how to remove ticks, tick safety (what to wear), and tick safety related to pets. Approximately 100 tick kits were distributed at the annual Office for The Aging picnic held on August 21, 2024.



4-H CAMP SHANKITUNK MAKE NEW FRIENDS BUT KEEP THE OLD

4-H Camp Shankitunk had an excellent year, seeing 578 overnight campers, 71 progressive Day Campers and 75 Day Campers. This totals to 724 campers in attendance this year. In addition to continuing on 4-H Camp Shankitunk's beloved tried and true activities, songs and games, some exciting new classes were added this year. This includes the introduction of the Fire Building class which was very well received by campers. In this class, campers learned all about fire safety, being responsible with camp fires, different types of fires, how to build fires and how fire can be an important and useful survival skill. 4-H Camp Shankitunk was also excited to bring back Backpacking II from its hiatuses due to COVID regulations. Counselors and Campers once again made the hike up to the top of the Lennox Forest for a night under the stars with amazing views and good times to be had by all. Another tradition that was re-introduced since COVID was the much anticipated Supervisors Dinner traditionally held at camp every year. Supervisors were invited to tour 4-H Camp Shankitunk, speak with the Camp Director, enjoy a meal and get exciting updates from CCEDC program areas. Spe-

cial this year was the dedication of the new 4-H Camp Shankitunk Director's plaque which will hang alongside the original plaque in the dining hall. The Director plaques include the names of all the Camp Directors who have ever served at camp since its creation in 1927. Needless to say, another amazing and memorial year at 4-H Camp Shankitunk is in the books. We wish all our Counselors, Staff and Campers an amazing year as we say at camp, "This is goodnight and not goodbye" and we'll see you in 2025!



TAKING 4-HER'S LEARNING A STEP FURTHER

Every year there is tons of excitement around the Annual 4-H Livestock Auction held on the Saturday afternoon at the Delaware County Fair. 4-H Members put in countless hours caring for and training their beef, swine, meat goats and sheep in preparation for their respected shows and eventually the auction. The livestock animals receive their placings in the show and eventually make it into the ring to be sold at the auction. However, the 4-H Members ability to learn from their project animal as well as receive recognition for all their hard work does not stop there. For the past several years, 4-H Members have been able to participate in a Carcass Evaluation program once the animals go to their chosen processing facilities (not all processing facilities participate in these evaluations, only 4-H Member's who's animal goes to a participating facility are able to be evaluated). These animals are graded against USDA standards and placed accordingly. Not only does this recognize members whose animals have produced a great product, it also gives essential feedback to the 4-H Members on their feeding/nutrition programs, herd health, genetics and overall animal performance to be adjusted and considered for their future Market Animal projects. These results are further explained and compared at yearly 4-H Carcass Evaluation Results programs where 4-Hers can get clarification on their results and learn areas where they are excelling and can improve. This year's top Carcass Evaluation results are as follows:

Beef

Grand Champion: Sophie O'Brien

Reserve Grand Champion: Noah DeBoer

Swine

Grand Champion: Alaina Muller

Reserve Grand Champion: Ashley Madungo

Meat Goat

Grand Champion: Anne Marie Westbrook

Reserve Grand Champion: Noah DeBoer

Sheep

Grand Champion: Anne Marie Westbrook

Reserve Grand Champion: Baylee DeBoer

Congratulations to the Grand Champions and Reserve Grand Champions! Once again thank you to all the buyers and community members who come out to support the 4-H Member's Livestock Animal projects at the auction. We look forward to seeing you next year!



Smart Energy at CCE

Our Delaware County Community Energy Advisor (CEA) has completed over 30 outreach events at food pantries, clinics, family events and fairs. During these events, she has reached over 1200 New York State residents, roughly 80% of these residents lived in Delaware County. Over 20 Delaware County residents have received one on one energy advising, with 20% of these residents having received Energy Upgrades and/or Energy Assessments in their home. Over 30 different agencies have been met with to partner at events or have been met with to educate about our programs and learn how together we can assist our neighbors.

At the Delaware County Fair, the “Power House” was on display for the community. It is a tiny home on wheels that is used for education outreach. People can tour the Power House while learning about energy efficiency. This event was a true hit for educating Delaware County Residents. We had over 1000 people come in and tour the Power House, learn about energy efficiency and NYSERDA programs.



OUR HAMDEN STAFF...



Nancy Grotevant
Interim Executive Director



Paul Cerosaletti
**AG Program Team Leader/ CIG
Enhanced Manure Management
Project Coordinator**



Ashley Silano-Moore
**Human Ecology Team Leader/
Interim 4-H Team Leader**



Desiree Keever
**Farm Business Management &
AG Development Educator**



Amy Vanalstyne
Nutrition Program Educator



Samantha Edel
Community Energy Advisor



Kaitlyn Conklin
4-H Subject Educator



Jonathon Conklin
Camp Director



Charles Engle
Finance Manager

AGRICULTURE PROGRAM STAFF...



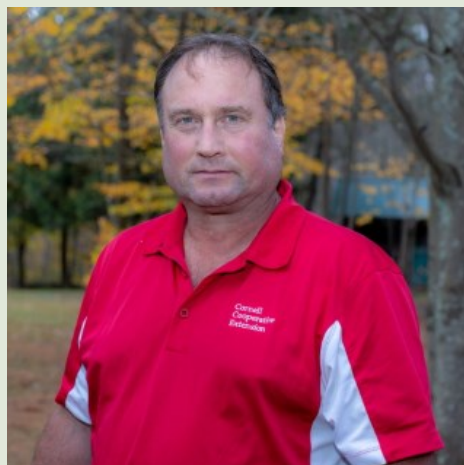
Dale Dewing
Sr Team Leader,
WAP Nutrient Management



Rich Toebe
Sr Resource Educator,
WAP Dairy/Livestock



April Wright Lucas
Community Educator,
WAP Precision Feed Management



James Romack
Community Educator,
WAP Precision Feed Management



Kim Holden
WAP Sr Administrative Assistant



Carla Krim
Resource Educator
Horticulture & Natural Resources



4-H Camp Shankitunk is a shining star in our NYS 4-H Camp network having operated for the past 97 years! With its strong history of success 4-H Camp Shankitunk has been a leader in the expansion and support of our growing 4-H camp network.

In the summer of 2024 17 CCE Associations operated 26 physical 4-H camp sites. At those locations there were 32 day and overnight operations. 9,971 youth attended these camps supported by 558 camp employees and 46 volunteers.

4-H Camp Shankitunk has been a valued partner camp providing scholarship opportunities from National 4-H Council and SCOPE-Summer Camp Opportunities for Promoting Education to the youth of Delaware County for many years. It is partnerships and opportunities like this that position 4-H Camp Shankitunk as a leader with our network.

Keep up the great work at 4-H Camp Shankitunk!

Shawn R. Tiede

NYS 4-H Camping Specialist



Cornell Cooperative Extension

Delaware County

Cornell Cooperative Extension is an employer and educator recognized for valuing AA/EEO, Protected Veterans, and Individual With Disabilities and provides equal program and employment opportunities